

Overview

Robust over-shelving with Quartz lamp heating, Cleverly designed offering a choice of one, two, or three tiers. Standard lengths are made to suit the Versigen Premier range of hot cupboards and Bain Maries, creating a functional heavy duty kitchen pass.

The pass facilitates an easy two-way communication work station between dining room/front of house and the kitchen, where meal orders are placed and prepared. Chefs plate up and place on the pass to be served. if there's a delay, plated meals are held warm under the heat lamps. Complete with on-off switches to each level as standard or fitted with an optional dimmer to control the lamps, or an energy saving timer switch. The Unique horizontal illuminated bands on the end sections at each level provide an aesthetic style when seen from the dining room.



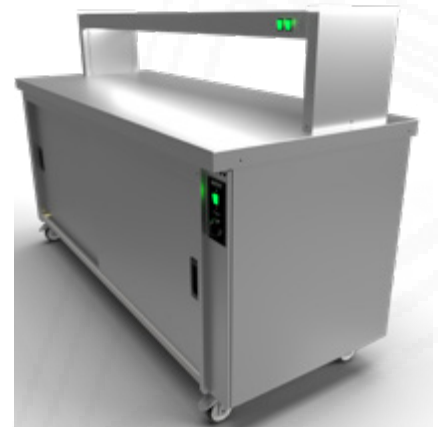
Two tier shown with Hot cupboard & Bainmarie

Key Features:

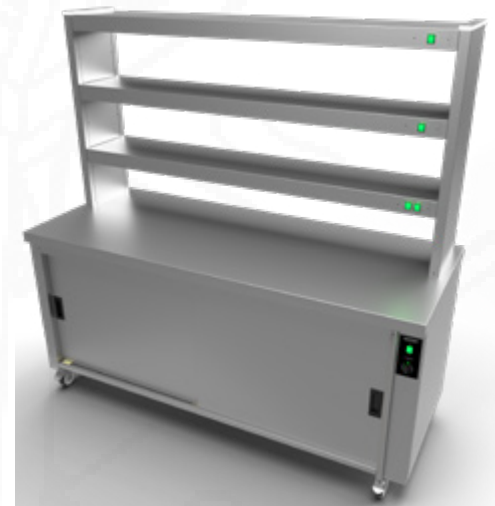
- Flexible choice off one, two, or three, tier design.
- Available in five standard lengths
- Standard sizes specific to Versigen Premier Hot cupboard and Bain Marie units.
- Alternative lengths and configuration are available priced on application.
- Heavy duty robust 300mm wide shelving
- Low maintenance, easily cleaned and highly efficient.
- Attractive Illuminated end sections indicates service is "on"
- 24 hour operation.
- Supplied with a 2 metre long power cable and plug as standard
- Alternatively the units can be supplied hard wired into a Versigen supporting unit.

Options:

- Tab grabber (code:- MJG)
- Dimmer control lamps (Code:- DMC)
- Time delay switch for energy saving (Code:- TDS)
- 13amp sockets fitted to inner side Code:-SSO)
- Alternative lengths. POA
- Mixed configurations heated / non heated levels. POA



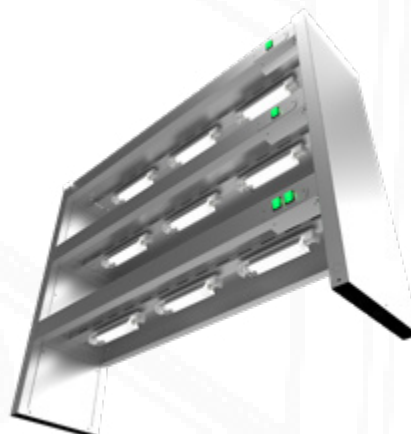
One tier shown with Hot cupboard



Three tier shown with Hot cupboard



Featuring unique horizontal illuminated end sections indicating service is on as well as providing an aesthetic style when seen from the dining room.



Gantry options

Heated models to suit Premier Hot cupboards and Bain Maries.

	Model	Model Size	Weight (kg)	L x W x H (mm)	Number of 220w lamps	Electrical Supply	Power Rating (kw)
One Tier	KP2H1	2	8	876 x 311 x 322	2	10 amp	0.44
	KP3H1	3	11	1196 x 311 x 322	3	10 amp	0.66
	KP4H1	4	15	1492 x 311 x 322	4	10 amp	0.88
	KP5H1	5	18	1796 x 311 x 322	5	10 amp	1.10
	KP6H1	6	22	2146 x 311 x 322	6	10 amp	1.32

	Model	Model Size	Weight (kg)	L x W x H (mm)	Number of 220w lamps	Electrical Supply	Power Rating (kw)
Two Tier	KP2H2	2	16	876 x 311 x 632	4	10 amp	0.88
	KP3H2	3	22	1196 x 311 x 632	6	10 amp	1.32
	KP4H2	4	28	1496 x 311 x 632	8	10 amp	1.76
	KP5H2	5	34	1796 x 311 x 632	10	10 amp	2.20
	KP6H2	6	40	2146 x 311 x 632	12	15amp	2.64

	Model	Model Size	Weight (kg)	L x W x H (mm)	Number of 220w lamps	Electrical Supply	Power Rating (kw)
Three Tier	KP2H3	2	24	876 x 311 x 942	6	10 amp	1.32
	KP3H3	3	32	1196 x 311 x 942	9	10 amp	1.98
	KP4H3	4	42	1496 x 311 x 942	12	15 amp	2.64
	KP5H3	5	52	1796 x 311 x 942	15	15 amp	3.30
	KP6H3	6	62	2146 x 311 x 942	18	20 amp	3.96

