

Overview

Cashier counter unit in either left or right hand configuration design to link up with any other models in the range providing a point of sale work station for cash register, cash drawer, or Epos system. Each unit is supplied fitted with a work top cable port, a moulded 15 amp plug and a double switched socket to plug into. Complete with a sloping rubber footrest. Suitable for most types of cash registers, barcode scanners and Epos systems.



Key Features:

- Low maintenance, easy cleaned and highly efficient.
- Tidy work top cable port
- Sloping rubber footrest
- Double switch 15amp socket
- Mobile all swivel castors two with brakes.
- Supplied with 2m long power cord and 15amp plug [15A 230v 50Hz].

Options:

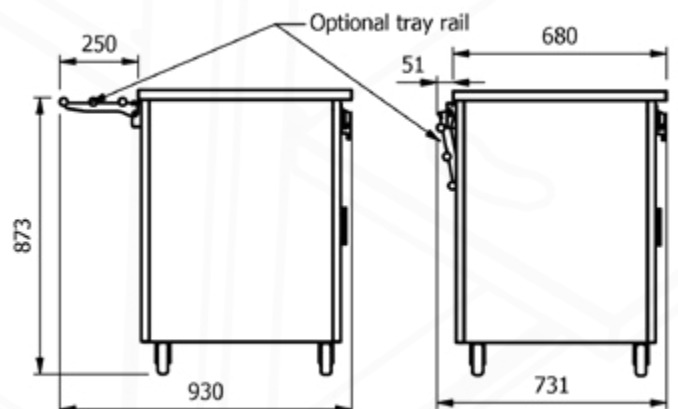
- Wide choice of coloured outer panes (Durable plastic coated steel).
- Fold down solid tray slide or tubular tray rail.
- Lockable Cash Drawer (code: VLCD)

Optional solid tray slide

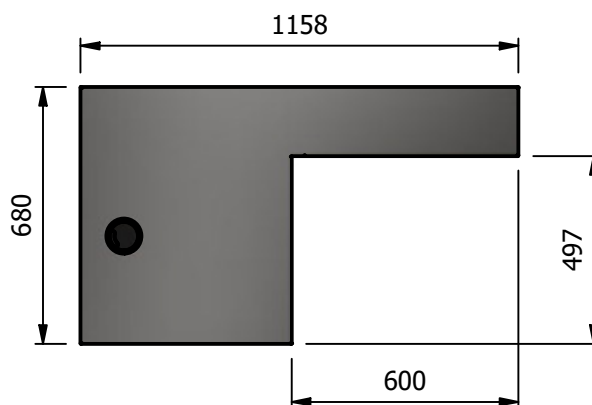
Model	Matching Unit size
VC2TS	2
VC3TS	3
VC4TS	4
VC5TS	5

Optional tubular tray rail

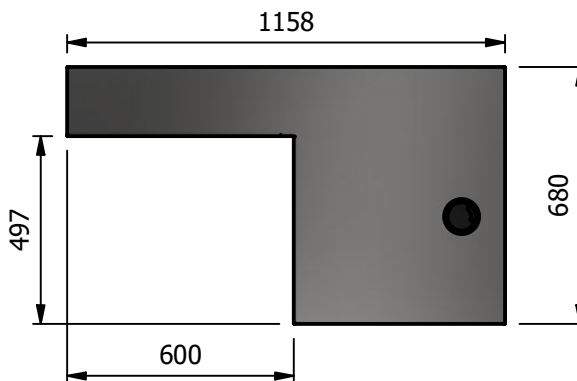
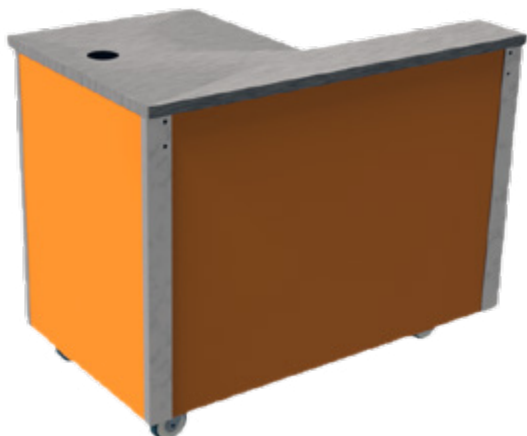
Model	Matching Unit size
VC2TR	2
VC3TR	3
VC4TR	4
VC5TR	5



Model	Weight (kg)	L x W x H (mm)	Configuration	Electrical Supply	Power Rating (kw)
VCRCS	60	1158 x 680 x 900	Right hand	15amp	2.9
VCLCS	60	1158 x 680 x 900	Left hand	15amp	2.9



Note:
Right hand model VCRCS



Note:
Left hand model VCLCS

