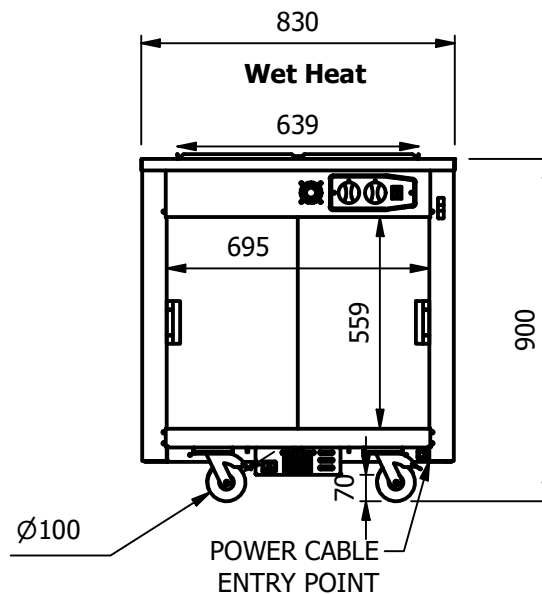
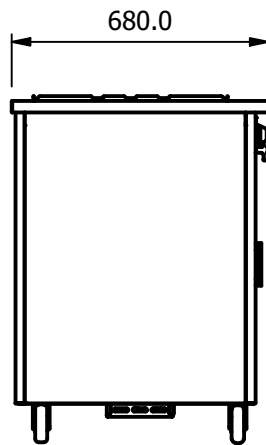
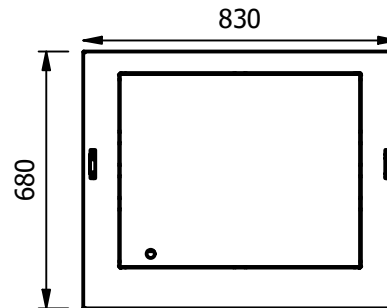


NOTE:- Serving height for children up to 12 years of age.
This model is available with a work top height of 800mm
and a Trayslide height of 773mm.
Please add "B" to the end of the product code.



Specification

Wet heat Bainmarie well

Water level is an economic, 20mm deep with a water level mark on the well, complete with drain valve and swing-out run-off tube for easy emptying. The well has a raised lip designed to hold Gastronorm pans and heats via solid state elements fitted under the well, additional excess residual hot air from the hot cupboard is also used to maintain temperature which gives energy savings.

Dry Heat

Fan Assisted Hotcupboard

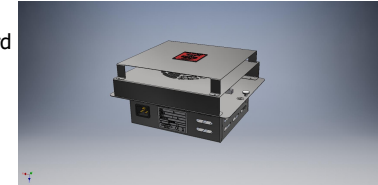
Dimensions

Width - 830mm

Depth - 680mm

Height - 900mm

Weight - 51kg



Sahara Fan Model SF309

Capacity of Bainmarie

Two GN1/1 pans up to 150mm deep

[Note:-pans are not supplied, available at extra cost]

Capacity of Hot Cupboard [usable inside space]

Width - 695mm

Depth - 555mm

Usable Height Bottom shelf - 204mm

Usable Height Top Shelf - 245mm

25 covers & meals

[10" plated meals stacked using plate covers]

or

95 off 10" plates stacked for heating

or

4 off 1/1GN pans side by side 150mm deep

2 on top 2 on bottom

Power Rating

2.40kw with no gantry, 2.62Kw with heated gantry.

complete with a 2m long cord set & 15amp plug

Removable Fan heating System Sahara Fan Model SF309

Materials

1.2mm 304 Grade St/ Steel Top & Supports

0.7mm 430 Grade St/ Steel Internal Structure

GN 1/1 Grid Shelves with 30mm x 30mm tube supports

Installation

All swivel castors, two braked

ALL SHEET METAL DIMENSIONS ARE I/S (INSIDE SIZES) (UNLESS OTHERWISE STATED)

ALL DIMENSIONS IN (mm), TOLERANCE = LINEAR $\pm 0.5\text{mm}$, ANGULAR $\pm 0.5\text{mm}$ (OR AS STATED). ALL SHARP EDGES TO BE REMOVED FROM SHEET METAL PARTS

Product	VERSICARTE			Product No	N/A		<div><div><div></div></div><div>No reproduction or publication of this drawing may be made, and no article may be manufactured or assembled in accordance with this drawing without prior written consent. This prohibition is a term of any contract relating to this drawing. Rights reserved under the Copyright Act 1956 as amended by the Design Copyright Act 1968.</div></div>		<div><div></div><div>Versigen</div></div>		
Description	*** VC2BMW ***										
Material/Finish		Thickness		Desp/Date							
Legacy P/N		Weight	51KG	Quote No.			Dwg No.	084976-1	Issue		
Client				SO Number	N/A		Drawn By	ABB	-		
Client Project				Approved By			Date	26/10/2020			
VERSIGEN AUSTRALIA PTY LTD, 182 HARTLEY ROAD, SMEATON GRANGE, NSW 2567, T: +61 (0)131 653 330, E: sales@versigen.com.au, Web: www.versigen.com.au							Scale	1 : 20	Sheet	1 / 1	A4